



What is LENA Grow?

It's a practice-based, data-driven professional development program for early childhood educators. LENA Grow gives educators the tools they need to improve language environments equitably and to truly connect with each and every child in their care.

What are Conversational Turns? They are simple, back-and-forth alternations between a child and an adult. They are LENA's proxy for "serve and return" interactions. LENA technology is unique in that it can automatically count the conversational turns a child experiences across a whole day. According to a rapidly growing body of peer-reviewed research and independent evaluations, increasing conversational turns is shown to have both short- and long-term benefits for children.

What do these results mean? Up to 40 conversational turns per hour, **each increase of two turns per hour** is associated with a **one-point increase in Full Scale IQ**.

By the Numbers



Classroom groups

238 have enough data to be included in the impact reporting below.

241



Children

1,873 have enough data to be included in the impact reporting below.

2,248



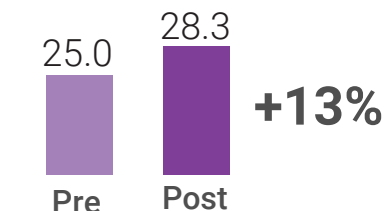
Teachers

347 teachers chose to pursue certification and were certified.

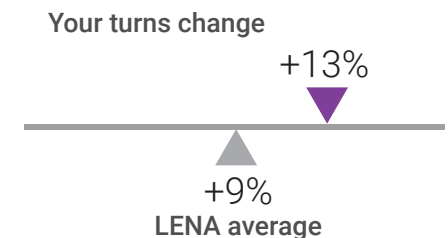
382

Child Impact: All Children

Conversational Turns



Average increase of **+3.3 Turns per hour**.

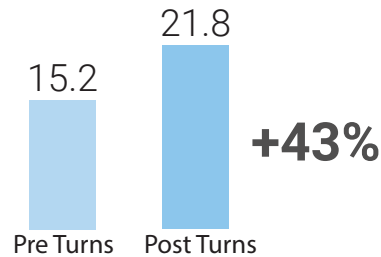


These turns gains are greater than **71% of LENA partners**.

Child Impact: Equity

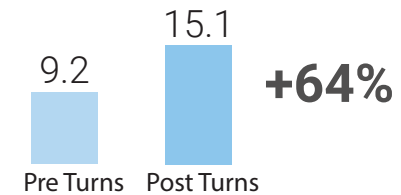
LENA Grow is designed to encourage more equitable talk environments. Two segments of children measure this impact.

Children in Bottom Third of Room



Children who started out experiencing **less talk compared to other peers in their classroom** had an average increase of **+6.6 turns per hour**.

Children Experiencing Low Talk



Children who started out experiencing **less talk than the national median of 15 turns per hour** had an average increase of **+5.9 turns per hour**.

Teacher-Reported Impact

At the end of a 5-week sequence, teachers complete a survey reporting on the impact of the LENA Grow program.

Recommend LENA Grow



would recommend to other teachers.
(n=154)

Teacher Confidence



helped them feel more confident in teaching abilities
(n=154)

Job Satisfaction



increased overall job satisfaction
(n=154)

Family Engagement



increased their communication with families
(n=152)

Child Language Development



saw positive changes in children's language development
(n=153)

By the Numbers Statistics

Classroom Groups

Impact Criteria	Grow 1
Meets	238
Does not meet	3
Total	241

Children

Impact Criteria	Grow 1
Meets	1,873
Does not meet	375
Total	2,248

Teachers

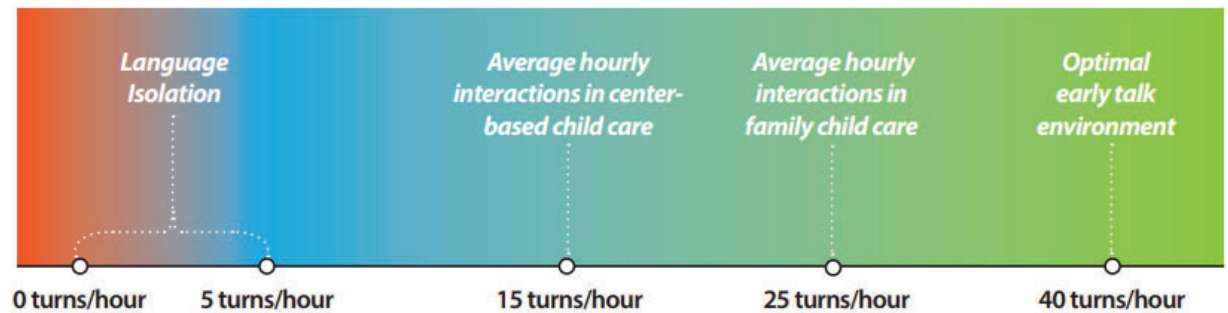
Certification Criteria	Grow 1
Meets	347
Does not meet	35
Total	382

Child Impact Statistics

Child Impact (Conversational Turns per Hour)

Impact Segment	Sample Size	Pre Mean	Post Mean	Mean Δ	Percent Δ	Cohen's d*	Effect Size*
All participants	1,873	25.0	28.3	+3.3	+13%	0.2	small
Bottom third of room	526	15.2	21.8	+6.6	+43%	0.7	medium
Low talk (<15 Turns)	569	9.2	15.1	+5.9	+64%	1.6	large

LENA Benchmarks



How are the LENA Benchmarks determined? They are derived from baseline LENA data measuring the language environments of over 15,000 children across more than 2,000 classrooms and 80 partners worldwide. Publicly funded, privately funded, center-based, and family child care sites are all represented within the sample, as are all 10 Head Start regions.

Further information on these benchmarks and other LENA data insights can be found in LENA's 2021 Inside Early Talk report, available at lena.org/research.

*Cohen's d is a commonly used measurement of the standardized mean difference, and is used here to determine effect size.
Cohen's d Effect size key: d of less than 0.5 is "small"; d of 0.5 to 0.8 is "medium"; d of 0.8 or greater = "large."